

NEMA 4X / IP65 Enclosed Operator Interface 4" Diagonal TFT with Touch



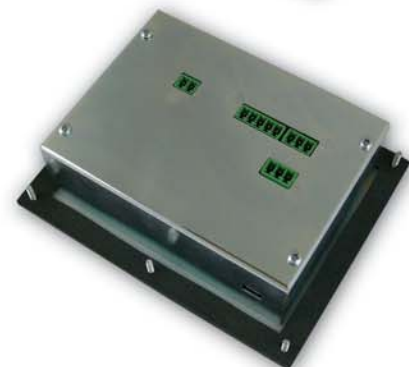
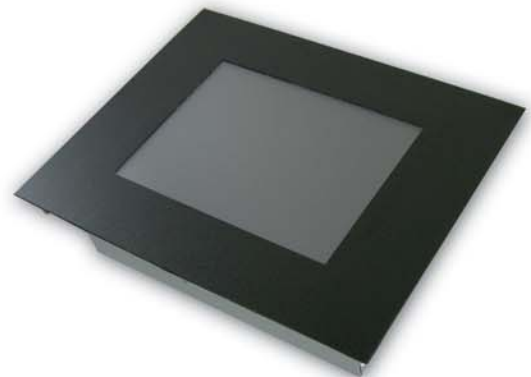
This smart Graphics Terminal replaces panel switches and LCD character displays to provide a modern and attractive user interface for embedded systems. A polycarbonate overlay covers the entire visible surface, making it completely sealed; the display window is optically bonded to the touch screen for bright, clear performance. When mounted in a NEMA 4 enclosure, the unit's die-cut rear gasket ensures protection from water and dust. Rear connectors are two-part "Phoenix" type for easy wiring.

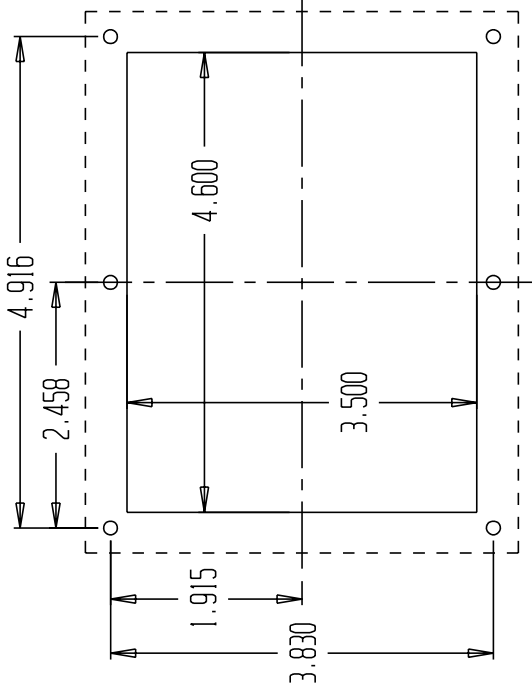
Development is fast and easy with a high level command structure and macro facility. Your embedded system can have a great looking custom interface up and running in days.

Module Specifications

Power	12-24V DC, 6 Watts maximum
Interface options	RS232, RS422, RS485, USB (device) Speeds from 230,400 baud to 9600 baud
Temperature	-20° C to 70° C (*)
Horizontal viewing angle	65° left, 65° right typical
Vertical viewing angle	50° up, 65° down typical
Brightness	350 cd/m ² typical
Touch	Resistive

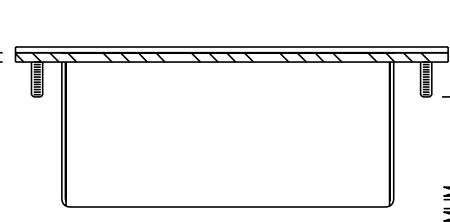
(*) temperature to -30°C available as special order



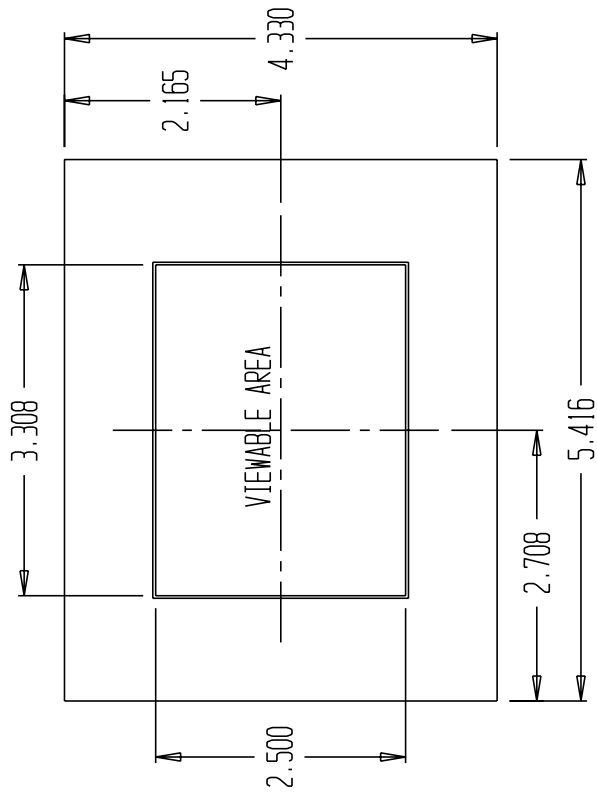


MOUNTING HOLE DIMENSIONS

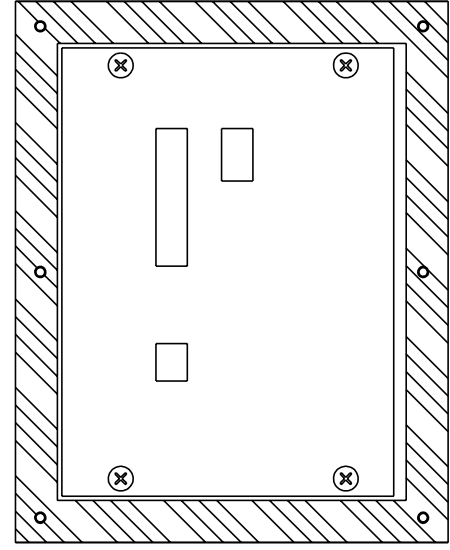
GASKET THICKNESS
UNCOMPRESSED .092
COMPRESSED .047



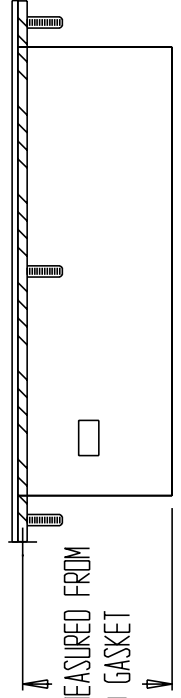
.350 MINIMUM
STUD LENGTH,
UNCOMPRESSED
GASKET



VIEWABLE AREA



BACK VIEW



1.495 AS MEASURED FROM
COMPRESSED GASKET

APPROVALS	DATE
DRAWN D. PEYTON	05/08/07
CHECKED	
DESIGN	
PROJ MGR	
MFG	
QC	
DO NOT SCALE DRAWING	



NEMA 4 INCH SILCO ENCLOSURE

SIZE	SCALE	PART NO.	REV.
C	1/1	42-0110	1
FILE NAME			SHEET
			1 OF 1